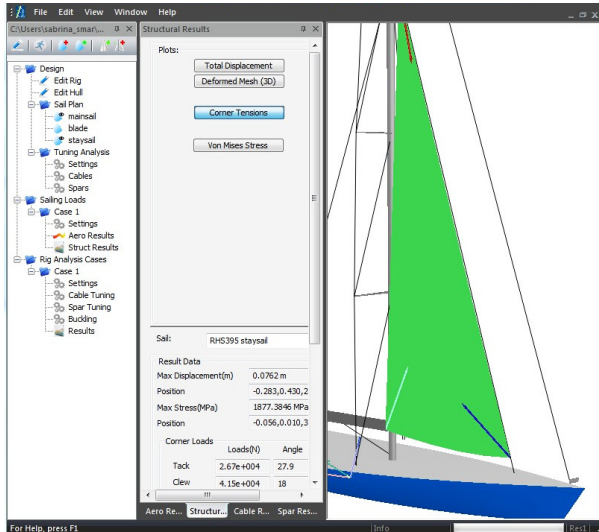


# RigEdge v 3.0

## The new rig design experience

The brand new version of RigEdge dramatically improves the rig design & analysis experience



Over the last months, SMAR Azure focused on making the rig design experience even more user-friendly.

The new RigEdge design interface drives you through the various rig design phases via a tree-based designed work-flow, which also allows to store multiple geometries, tuning and sailing load cases. Not only does the new design interface speed rig design up as every tool is at the user's fingertips, but moreover it supports the designer from conceptual design phase to rig finalization, because all information and data are now stored in a single rig project file.

Some of the new features are

- **SAIL Loads:** via a quick wizard, the designer can set sailing and rig settings in one single operation
- **Load cases:** it is now possible to create multiple load cases, by varying tuning settings and sailing conditions. All Load cases are available to review at any time

### RigEdge V. 3 reinforces its MAIN BENEFITS

- ✓ Speed Up Rig Design
- ✓ Explore Alternative designs
- ✓ Communications with clients made easier

To learn more and get a demo version please contact us

## RigEdge – PREMIUM FEATURES

### DYNAMIC

In collaboration with RINA Services S.p.A. SMAR Azure also developed RigEdge DYNAMIC. This module is used to evaluate the impact of inertial loads on the rig

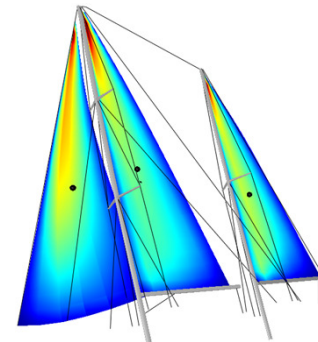


### ADVANCED AERODYNAMIC ANALYSIS

Advanced Aerodynamic Analysis generates sail coefficients for VPPs

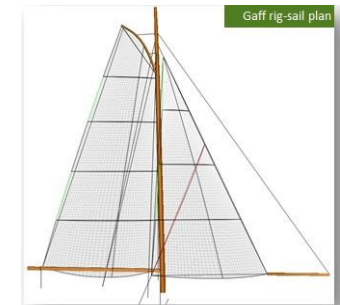
### MULTIMAST

The multi-mast feature helps with the design of complex rig models for yachts with multiple masts

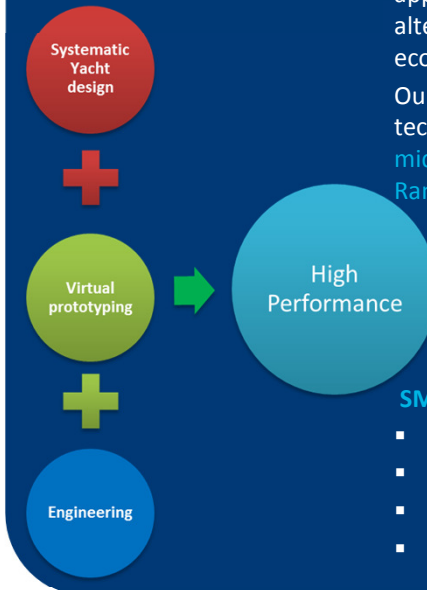


### GAFF -RIG

Gaff-rig allows defining mast bend, gaff spar bend and rigging dimensions. It can be used for high and low aspect ratio gaff-rigs.



## SMART DESIGN



SMAR Azure pioneers a SMART DESIGN approach to quickly design and test alternative solutions that develop fast, light, eco-friendly yet structurally sound yachts. Our integrated sail-rig-boat design technology is used in conjunction with midasNFX (FEM/FEA) and advanced CFD-Ranse.

Our R&D team has a proven track record in the design, aerodynamics, structural and aero- elastic analysis of sailing yachts and their components.

### SMAR design approaches: BENEFITS

- Cutting prototyping costs
- Increasing structural reliability and speed
- Reducing weight
- Solving project management issues

### 12-months license options

Beside the traditional PERPETUAL LICENSE option, it is now possible to RENT RigEdge annually (12 months). The ANNUAL license fee includes Maintenance & Support services, which means bug fixing, free software updates and dedicated technical support via Skype/email/phone & e-ticket system.

The ANNUAL License option offers important advantages: not only are the Maintenance and Support services included, but moreover, if the annual rent is renewed for 2 consecutive years, the license will become perpetual!!