

**IN THIS EDITION:**

**AZURE PROJECT 6.0.0.8 RELEASE**  
· Read about the new features

**GETTING STARTED WITH AZURE PROJECT**  
· Feedback from Bohndell Sails

**FRANCESCO'S CORNER**  
· Patches and UV covers

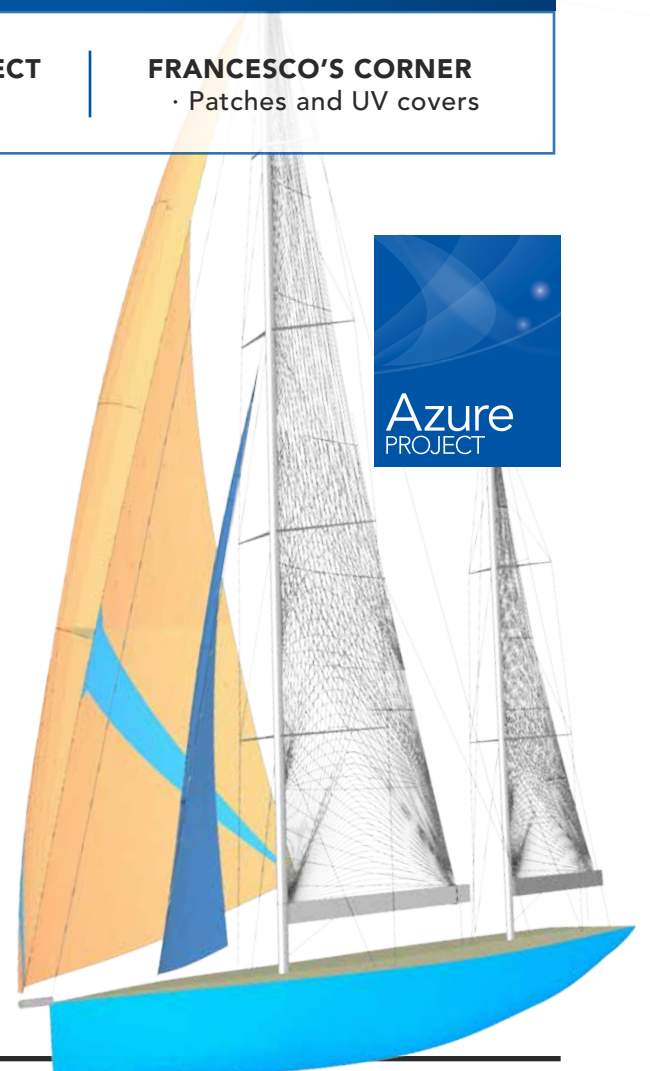
**NEW VERSION RELEASE**

**AZURE PROJECT v6.0.0.8**

**TRY  
THE DEMO**

A new version of AzureProject has been released. It brings additional features to:

- **Optimise production**, with:
  - ▶ the ability to set zone seams with one edge straight for faster assembly of tri-radial sails
  - ▶ ability to mark the batten inner end with a '+' only, saving plotter time, and for a cleaner finished product
  - ▶ manage layer and colour names in the dxf ACAA format, improving compatibility with nesting/plotting software.
- **Improved design evaluation and comparison**, as it is now possible to visualise zone broadseams in the broadseam viewer.
- **Various bug fixes** in seam alignment with the battens, excess on gaff sails, and more.



**ROBIN CHACE-PAYSON - BOHNDELL SAILS**  
**GETTING STARTED WITH AZURE PROJECT**

Bohndell Sails are one of our newest AzureProject customers, having purchased the software this spring. We asked Robin Chace-Payson, the loft owner, for her first impressions on using the software.

She said that one of the main selling points for them was the **Gaff Sails** module, since previously they had to do a floor layout for gaff rig designs. They found that even though **AzureProject** has a lot of features, the interface is set up logically to guide you through the design process, and with assistance from our support team, they were quick to get up and running. Robin mentioned that the support was excellent, providing info on how to use the software as well as feedback on sail designs.

Many thanks for the excellent feedback, Robin!

**READ THE FULL INTERVIEW**

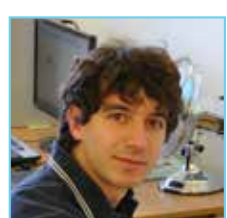


Photo (c) 2019 Robin Chace Payson - Bohndell Sails



*"We are very pleased with our decision to have purchased AzureProject and look forward to learning more about this program as time moves forward."*

Robin Chace-Payson  **BOHNDELL SAILS**



**FRANCESCO'S CORNER: AZURE PROJECT TIPS**  
**PATCH AND 2PLY HINTS**

AzureProject offers a variety of options to create patches. Here are some very useful options I would like to highlight:

**How do I create a second ply patch that matches the tri-radial panel layout?**

In AzureProject, the second ply patch is used when you want to create a patch that perfectly matches the tri-radial panel layout. By selecting the option "PLY", you can edit the shape and size directly, with your mouse. AzureProject then automatically creates the patch panels for you.

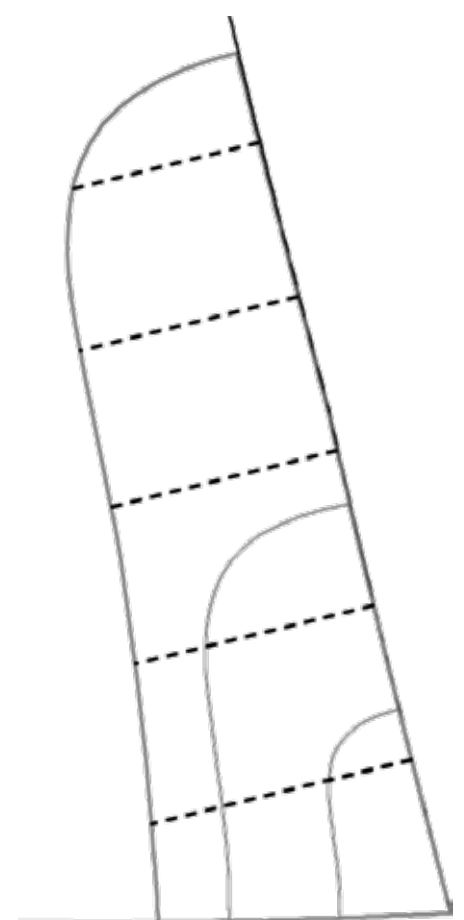
**How can I create a large cover patch on a cross cut sail?**

For cross-cut sails, the UV cover tool includes the option to create large patches covering multiple panels. Click on the "use second ply option" and define the outline shape and size with the mouse. AzureProject will then automatically create the seams and panels for you, matching the cross-cut panels.

**How can I make sure that my large stack patches do not exceed the cloth width?**

When you have stack patches on large sails and the patch layers are larger than your cloth width, AzureProject allows you to set cloth width, seam width and alignment in the "stack alignment settings" tab. Once these are set, AzureProject automatically divides the patches into panels for you.

If you have any questions, or you would like to know more about any features, please contact us at [support@smar-azure.com](mailto:support@smar-azure.com)



**Francesco Nasato**  
Support Engineer  
SMAR Azure