



Spring is a very busy time in the sailing world and at SMAR Azure! We've been involved in some exciting projects as well as in developing our products and team! This month, we are pleased to share the feedbacks received on **AzureProject**, from **Ernst Rohner** and **RigEdge**, from **Frank Blaas of Rondal**. Both Ernst and Frank describe how our software solutions and support team are helping them in achieving their goal in the most efficient way. Finally, we are also delighted to announce that SMAR Azure team is now stronger with the addition of **Francesco Salomone**. I hope you will enjoy reading this newsletter. We look forward to hearing from you!

Happy Sailing,
Sabrina Malpede

SMAR Azure team grows!

Meet Francesco Salomone—our Junior R&D Engineer.



Francesco joins our R&D team lead by Donald MacVicar (CTO) to support our next developments .

He holds a Master Degree (Hons) in Naval Architecture and Marine Engineering from the University of Naples, Federico II (Italy).

He has studied many different aspects of ship design, including stability, sea-keeping, hydrostatics and hull scantling. He also has an experience of working in a shipyard and in a Naval Architect's studio.



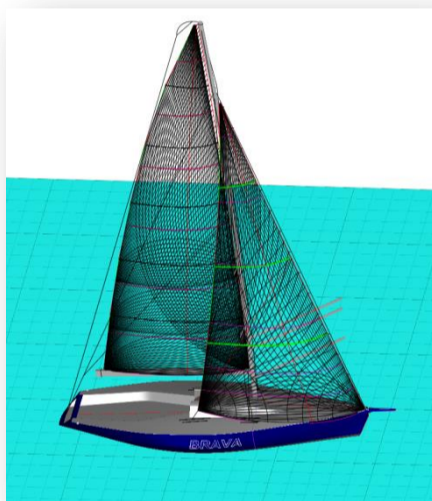
Photo: courtesy of Ernst Rohner

Brava wins international 3 Country Cup on Lake Constance

By Ernst Rohner

“Happy to report that we won this season’s first race on lake Constance in the ORC 1 class with sails **fully optimised** in **AzureProject PREMIUM**.

We won with 12 minutes of advantage after 5h15m of sailing in light wind conditions, which did not suit our type of boat.



[AzureProject demo CLICK HERE](#)

Thanks to SMAR Azure’s **“computer wind tunnel”**, we have been able to create a sail inventory, that made the boat notably faster in light wind conditions.

And now we will analyse our flying shapes and look for further improvements.

I would not have thought a couple of years ago, that we were going to develop our own sails in a systematic and scientific way.

I must say, this is truly amazing, great fun and a great learning experience.

All headsails and downwind sails were professionally manufactured by BSails in Italy by simply sending the design file and making some few additional specifications.

Overall, a very **smooth process.**”

Perini Sybaris Rig tuning, by **RONDAL**

Since 2013, Rondal technical team have used RigEdge for the structural design, tuning and preparation of the documents for rig certification purposes. Rondal specialises in superyacht rigs, thus every mast and rig configuration presents new design challenges.

Their design challenges have often provided us with important indications on how to improve and make RigEdge not only a solid and valid tool for rig design, but moreover the most advanced and complete one.

“This week I have worked on tuning the masts of the 70m Perini Sybaris (Hull C.2227 of Perini), which has been stepped up at the yard in Italy. Donald and Francesco helped me with two super quick new releases of the software to allow me to be able to work with this rig geometry: that was superb!

I've spent days on deck with the computer monitoring every step, we did tuning and giving the riggers information on how much to tighten or loosen stays to get the desired trim.

The results from the calculations were spot on and RigEdge was running without hiccups.

We achieved a full trim of the main mast (5 spreaders) in one day!

I want to thank SMAR Azure team for the support you have been giving us and also give you the compliment of producing this software which really is a good resemblance of the reality. I can say this now, having worked with a couple of rigs a few meters away from me and the model just in front of me on the laptop.”

Frank Blaas, Rondal B.V.

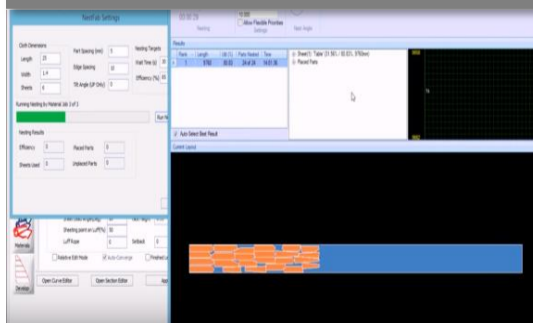
[RigEdge demo – CLICK HERE](#)

NestFab

NestFab is a high-performance nesting tool fully integrated with AzureProject, which means AzureProject users can simply nest panels and patches in a click. Typical performance is 85% of cloth usage providing excellent material utilization. It is user-friendly and intuitive: You will be nesting and outputting to your machine in minutes!

See how: [LINK HERE](#)

[NestFab demo – CLICK HERE](#)



For more information please CONTACT:

Sabrina Malpede

E | sabrina@smar-azure.com

T | + 44 131 610 7627

Australia & New Zealand

Brad Stephens

E | smar-azure@bradleystephens.com.au

W | www.smar-azure.com

Licensing options

Both RigEdge and AzureProject are available either as:

- **PERPETUAL** licence, or
- **ANNUAL** licence

Both licenses include 12 months of free Maintenance & Support services. The annual license offers also the option to become perpetual, if renewed for 2 more years.

