

IN THIS EDITION:

An Interview With:

· Marton Balazs - 8 World and 5 European championship

FRANCESCO'S CORNER

· Straight or curved edges on panels or zones

THE NEW AZURE PROJECT 6.6

· Check all the new features and Improvements

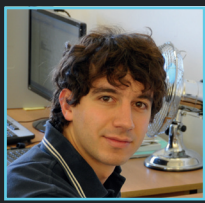


An Interview With:

Marton Balázs - 1D Sails designer and 8 World Championship titles using AzureProject

Won 8 World Championship titles in catamaran classes (F18, F16, Tornado), and 5 European Championship titles. Now 1D Sails are entering to the top of the A-cat fleet and the Moth fleet.

Read the full article here ...>



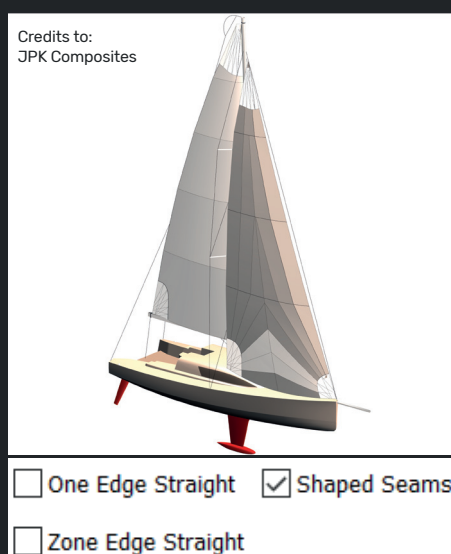
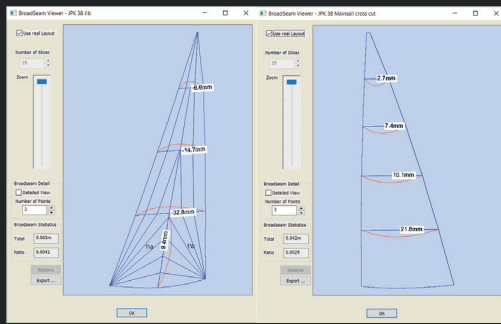
FRANCESCO'S CORNER: AZURE PROJECT TIPS

Straight or curved edges on panels or zones: A recap on the options

Recently the new "zone edge straight" option has been added to the seam layout tab. This improves the capability of the software on radial mainsails and headsails, allowing for one of the zone edges to be straight, to ease and speed up production.

Cross cut sails:

The "One edge straight" option enforces one edge of each panel to be straight putting the broadseam on the other edge. The user can choose which edge should be straight in the main properties pages using the "bottom edge straight" check box.



If you have any questions, or you would like to know more about any features, please contact us at support@smar-azure.com

Radial sails:

The "One edge straight" option can be set for each zone affecting only the seams within each zone. The "Zone edge straight" option then applies to seams between zones, allowing the same one straight side and one curved side on the zone seams.

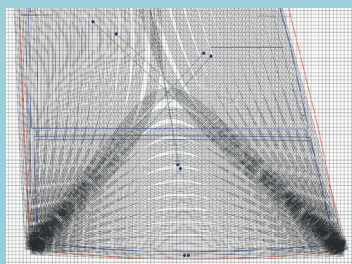
Radials seams can also be made straight using the "shaped seams" option, this removes all shape from the seams inside a zone, and if used on a full sail, the shape is then left only on the zone seams. This option is often used to allow a radial sailcloth to be used very effectively, improving production speed while still matching the load paths in the sail well.

Francesco Nasato
Support Engineer
SMAR Azure

AzureProject New Release:

This week, a brand-new version of AzureProject (v 6.6) will be released. Check the following added features:

- **Panels and patches dimensions and shapes** can now be printed out, so -if necessary- they are available for manual production or refinement.
- **Fibre design tool:**
 - Information added to increase design flexibility and accuracy such as view of the knock-back and cut out.
 - Assign different colours to various fibre groups is now simplifying selecting the groups to ease the design
- **Non-Aligned Fibre membrane design:**
 - For each fibre group you can enable the 'Grid' and 'handles' view option to simplify the design process.
 - For each panel, the 'seam allowance' is displayed
 - You can now create groups of sails panels, which are then saved in different files, to ease and sensibly improve the efficiency of the nesting
- **Refreshed Patch Editor graphical interface**, it now includes the import/export menu.



grid and handles on non-aligned fibre layout

