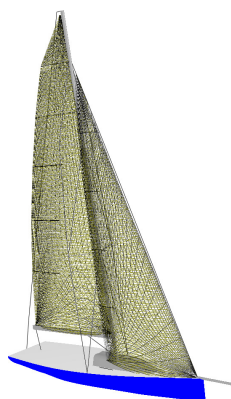




1. AzureProject – new features
2. New developments: MAST design technology
3. INNOV'SAIL2010 Conference
4. AUSTRALIA: point of contact

## MAST DESIGN TECHNOLOGY

### The Challenge



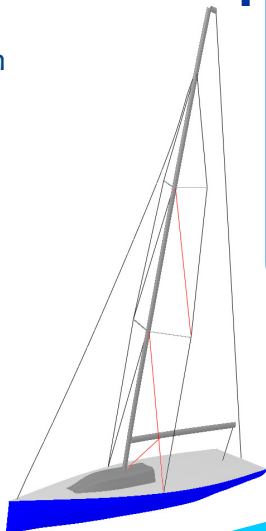
Mast and rig design play a key role in maximising the performance of sailing yachts. Weight, shape and materials are the main design parameters to optimise. The design of optimal rigs shall take into account realistic sail loads. Conversely, the design of optimal sail-plan shall consider mast/rig structural behaviour.

The challenge is to facilitate both

### The Solution

A fully integrated software technology that includes:

1. DESIGN: geometry & materials of rig, spars and sails;
2. ANALYSIS
  - Sail Aerodynamic Analysis
  - Sails Structural Analysis
  - Sails Aeroelastic Analysis
  - RIG-SPAR STRUCTURAL ANALYSIS



## INNOV'SAIL 2010 – 30 Jun - 1 Jul 2010

2nd International Conference on Innovation in High Performance Sailing Yachts – ([www.rina.org.uk/innovsail2010](http://www.rina.org.uk/innovsail2010))

Sabrina Malpede presented the New Fully Integrated Sail-Rig Analysis Technology.

To find out more, please contact

[sabrina@smar-azure.com](mailto:sabrina@smar-azure.com)

## AzureProject latest news

Donald manages the developments of AzureProject in collaboration with numerous beta-testers and customers.

Some of the latest improvements are:

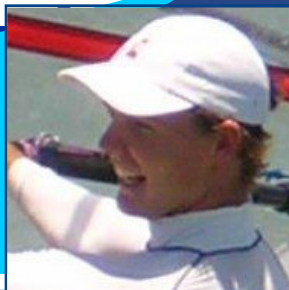
- Improved panel layout template → panel widths seam orientations are now preserved.
- Printouts reports panel layouts in colours.
- Added Tack knockback and outhaul cutout options.
- Multiple spinnaker hoists on a single rig.
- Asymmetric spi design defined by luff, leech and foot length



## Five questions to Yancy Smith

Ullman Sails Sunshine Coast Australia

[australia@smar-azure.com](mailto:australia@smar-azure.com)



Q1: Can you please introduce yourself?

I am Yancy Smith - CO owner of Ullman Sails Sunshine Coast, Australia and use AzureProject everyday to design sails

Q2. What type of sails do you design?

I design dinghy sails right through to large monohull and multihull sails for cruising and racing.

Q3. How long have you been using AzureProject for?

I started using AzureProject in December 2008

Q4. In short, what are the main benefits of using AzureProject?

A full set of design tools with great panel and patch layout flexibility, detail marks, fibre mapping and analysis tools all in one complete integrated package!!!

Very high quality 3D Graphics.

Q5: Would you recommend the use of AZUREProject to other sail-designers?

Absolutely! A great set of design tools

Feel free to contact Yancy for any question you may have!

# AUTOMETRIX

Precision Cutting Systems Inc.

SMAR-Azure is European Representative of AUTOMETRIX

[www.autometrix.com](http://www.autometrix.com)

Autometrix cutting systems are precise, accurate and reliable!

For more info contact

Alessandro:

[alessandro@smar-azure.com](mailto:alessandro@smar-azure.com)

