



During METS2017, SMAR Azure will organise the 7th AzureProject user group meeting. Contact us for more information

Say hello to Ed and Angelo, our new team members!

Edward Whipp and Angelo D'Angelo joined SMAR Azure in the beginning of August.

Ed holds an MEng degree in Naval Architecture from Newcastle University. Following graduation, he spent 3 years working in the offshore sector at DNV-GL, focusing primarily on ship structures. He is now supporting the technical development of innovative technology within the marine sector.

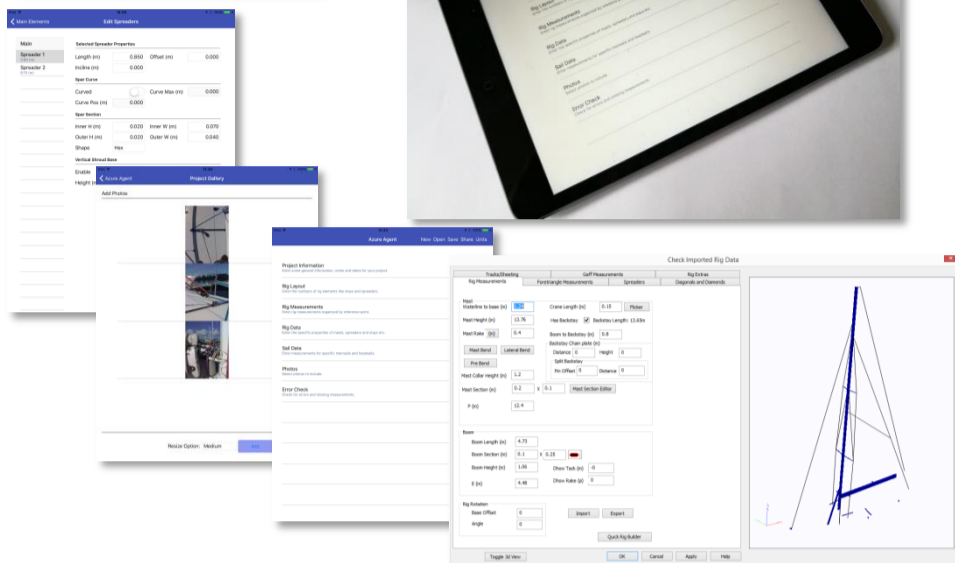
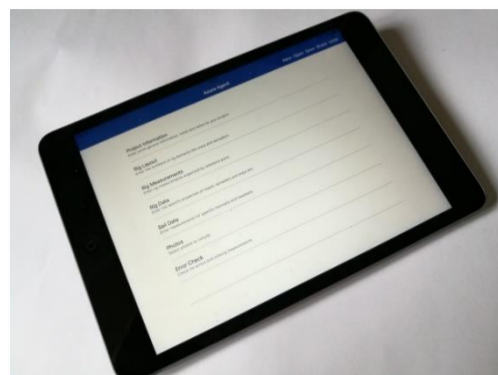


Angelo holds a BSc and a MSc in Aerospace Engineering from the University of Naples "Federico II",

and his work experiences focused on the structural simulation of metal and plastic components and the stress analysis of fibre composite parts. Angelo's main task is to support the team in the design of structures for renewable energies and marine field. He previously worked for Aerosoft in Italy.

Official release of the AzureAgent app!

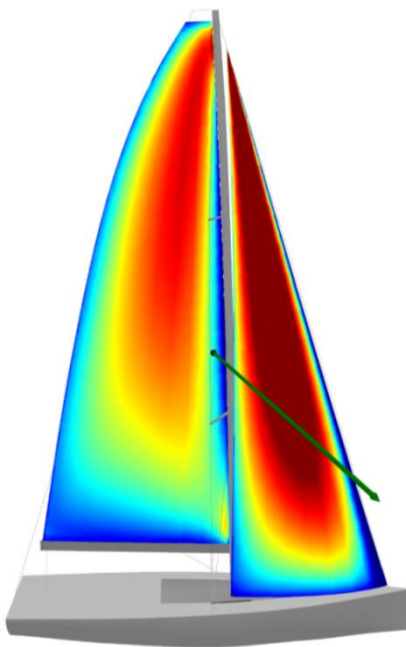
Finally our new app AzureAgent is officially released! It is now easier than ever to capture rig data which the designer can then use in AzureProject. Available in the Apple and Android™ app stores.



Donald MacVicar shares his knowledge in Waterkampioen Journal



Our Dutch readers can pick up the latest copy of the magazine Waterkampioen to take part of Donald MacVicar's, CTO at SMAR Azure, expert knowledge on aerodynamics. This Q&A section revolves around the mutual interaction between the mainsail and the jib, and how they aid each other with the air flow.



He goes into detail why sails must be trimmed properly to maximise the up and downwashes, which is explained with helpful illustrations.

Donald's contribution to the article is published in Waterkempioen, issue 9, 7th of September 2017



[AzureProject demo – CLICK HERE](#)

AzureProject is the leading solution for the design of sails and fiber layouts. It offers highly intuitive tools to easily create, validate and modify any type of sail and fiber layout.

[RigEdge demo – CLICK HERE](#)

RigEdge is a unique tool, which enables to rapidly define the rig dimensions, evaluate the sail loads on the rig and calculate the rig deformation and relative loads



For more information please contact

Sabrina Malpede

E | sabrina@smar-azure.com

T | +44 131 610 7627

Australia & New Zealand:

Brad Stephens

E | smar-azure@bradleystephens.com.au

W | www.smar-azure.com



[NestFab demo – CLICK HERE](#)

NestFab is a high-performance nesting tool fully integrated with AzureProject, which means AzureProject users can simply nest panels and patches in one click. [See how: LINK HERE](#)

Follow us on social media

