

RigEdge Lite is the new, unique and innovative software from SMAR-Azure, which enables yacht designers to rapidly define and optimise their sail plan and associated corner loads. This robust analysis tool quickly evaluates the sail force co-efficients and its corner loads.

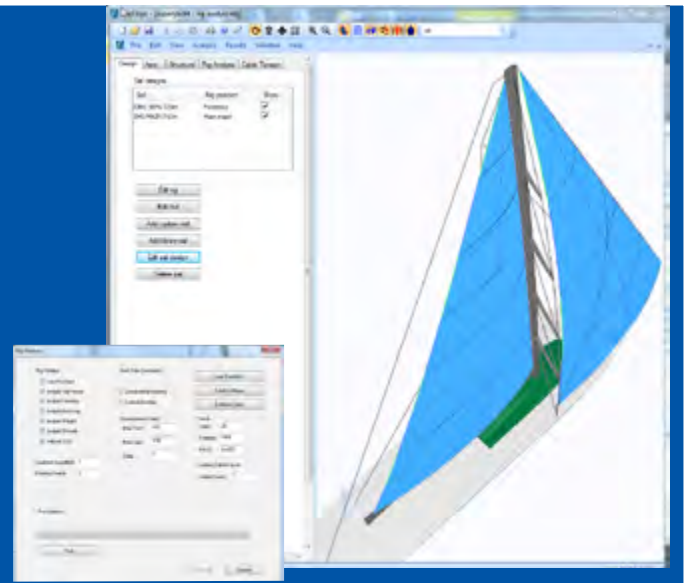
With RigEdge Lite you can:

DESIGN

- RIG - spars, standing and running rigging
- SAILS - mainsail and genoa,
- Hull and deck layout

CALCULATE

- Wind forces over the sail plan
- Sail loads on the rig
- Sail corner loads



Sail Load Evaluations

Sailing Conditions

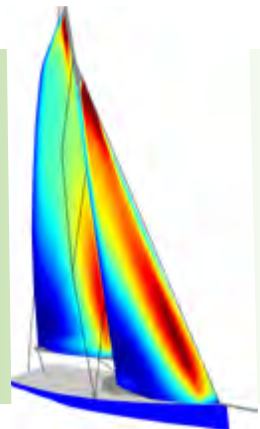
- Sailing angle
- AWA / TWA
- AWS / TWS
- Righting moment

CFD Results

- Pressure Distribution
- Sail coefficients
- Heeling moment

FEA Results

- Flying sail-shape
- Corner loads



Main Benefits

Speed up sail plan design:

The powerful, integrated sailplan design and fast analysis features help to accelerate the decision process.

Explore Alternatives:

Using robust design and CFD tools, it is possible to compare alternative sailplan performance and trimming conditions

Communicate with ease:

Using graphics and robust plotting, RigEdge Lite supports the communication of the designer and client

“For yachts where spars and hardware are custom made and designed, RigEdge provides a detailed insight into the ACTUAL loads for the sails” Martijn Van Schaik (Seahorse Naval Architects)

Contact us:

- email sabrina@smar-azure.com
- telephone +44 (0) 131 610 7627
- website www.smar-azure.com